

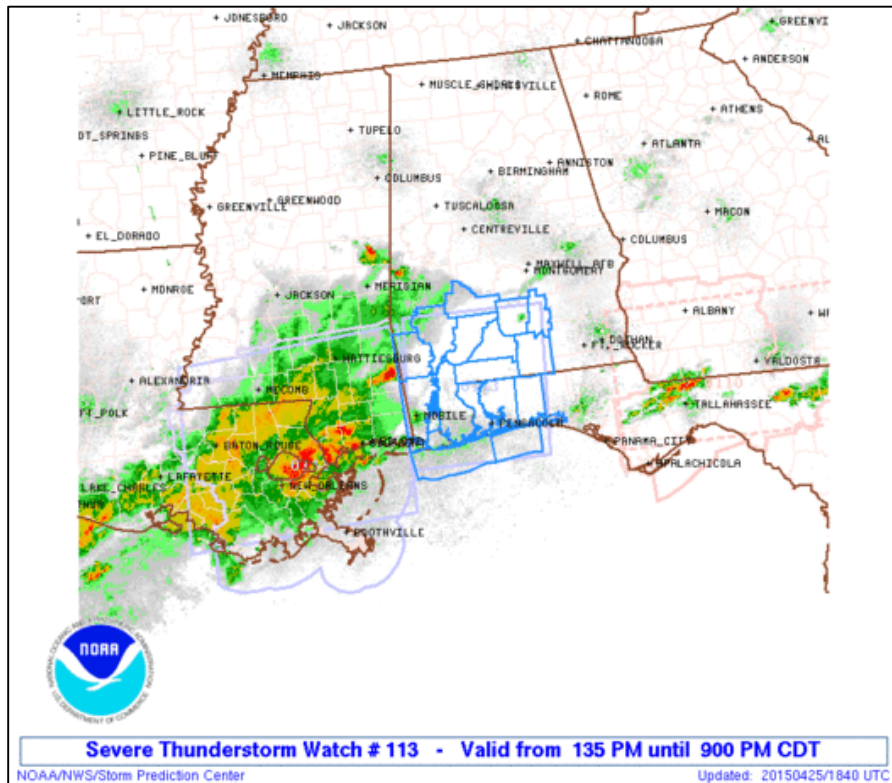


LakeErieWX

Marine Weather Education and Forecasting Resources

Time: 1835Z / 1:35 pm

Description: Severe Thunderstorm Watch #113



URGENT - IMMEDIATE BROADCAST REQUESTED
SEVERE THUNDERSTORM WATCH NUMBER 113
NWS SPC NORMAN OK
135 PM CDT SAT APR 25 2015

THE NWS SPC HAS ISSUED A SEVERE THUNDERSTORM WATCH FOR PORTIONS OF SOUTHWEST ALABAMA
WESTERN FLORIDA PANHANDLE COASTAL WATERS

EFFECTIVE THIS SATURDAY AFTERNOON AND EVENING FROM 135 PM UNTIL 900 PM CDT.

PRIMARY THREATS INCLUDE ISOLATED VERY LARGE HAIL EVENTS TO 2 INCHES IN DIAMETER POSSIBLE
ISOLATED DAMAGING WIND GUSTS TO 70 MPH POSSIBLE

SUMMARY

SEVERE STORMS ONGOING OVER SOUTHEAST MISSISSIPPI ARE EXPECTED TO SPREAD EAST ACROSS THE WATCH AREA THIS AFTERNOON INTO EVENING. LARGE HAIL AND DAMAGING WINDS WILL BE THE PRIMARY HAZARDS WITH THESE STORMS.

THE SEVERE THUNDERSTORM WATCH AREA IS APPROXIMATELY ALONG AND 60 STATUTE MILES EAST AND WEST OF A LINE FROM 35 MILES SOUTH SOUTHWEST OF PENSACOLA FLORIDA TO 35 MILES NORTH NORTHWEST OF EVERGREEN ALABAMA. FOR A COMPLETE DEPICTION OF THE WATCH SEE THE ASSOCIATED WATCH OUTLINE UPDATE (WOUS64 KWNS WOU3).

PRECAUTIONARY/PREPAREDNESS ACTIONS

REMEMBER A SEVERE THUNDERSTORM WATCH MEANS CONDITIONS ARE FAVORABLE FOR SEVERE THUNDERSTORMS IN AND CLOSE TO THE WATCH AREA. PERSONS IN THESE AREAS SHOULD BE ON THE LOOKOUT FOR THREATENING WEATHER CONDITIONS AND LISTEN FOR LATER STATEMENTS AND POSSIBLE WARNINGS. SEVERE THUNDERSTORMS CAN AND OCCASIONALLY DO PRODUCE TORNADOES.

OTHER WATCH INFORMATION CONTINUE WW 110 WW 111 WW 112

AVIATION A FEW SEVERE THUNDERSTORMS WITH HAIL SURFACE AND ALOFT TO 2 INCHES. EXTREME TURBULENCE AND SURFACE WIND GUSTS TO 60 KNOTS. A FEW CUMULONIMBI WITH MAXIMUM TOPS TO 600. MEAN STORM MOTION VECTOR 27035.